

Rover Service News Letter No. 56

June, 1955

TO ALL DISTRIBUTORS AND DEALERS

Dear Sirs,

The changes and developments set out below have taken place during the past month.

With this issue we are also including copies of Amendment No. 6 to the Land-Rover Parts Catalogue and Cumulative Supplement No. 2 to the 12th Edition of the Master Parts Price List.

SECTION I. POLICY

Item 128 SUBJECT: BODY TOUCH-UP PENCILS

REMARKS: As body touch-up pencils are of an inflammable nature, they must be packed separately from other spare parts, and special stowage arrangements have to be made when shipping these items overseas, or when supplying by Goods Train in the British Isles. Distributors are therefore requested to order these items in quantities of at least 20 pencils, so that economical consignments can be made up.

Existing regulations do not permit inflammable parts being despatched by air or parcel post.

SECTION II. WORKSHOP AND PARTS INFORMATION

Item 129 SUBJECT: STEERING UNIT

MODELS: 1948-55 Land-Rover

REMARKS: Some confusion appears to exist regarding the various changes which have taken place, and how it affects interchangeability, on the Land-Rover steering units fitted to the above models. The changes are as follows.

(1) Inner column and main nut

1948-53 R.H.D. models, right-hand thread
1954-55 R.H.D. models, left-hand thread
1948-53 L.H.D. models, left-hand thread
1954-55 L.H.D. models, right-hand thread

This change in thread is necessary due to the different relationship between the inner column and rocker shaft. On 1948-53 models the inner column is below the rocker shaft and on 1954-55 models the inner column is above the rocker shaft.

(2) Main nut, 1948-53 models

The bronze nut fitted to all 1948-52 and early 1953 models was replaced by a counter-bored steel nut. The inner column complete with steel nut can be used as a replacement on earlier models in spite of the difference in length.

ROVER SERVICE NEWS LETTER No. 56—*continued*

(3) Rocker shaft sealing, 1954-55 models

Rubber 'O' ring replaces cork seal. The latest steering unit and steering box is completely interchangeable with the earlier type.

IMPORTANT—When fitting the steel nut, see that the threaded portion is entered into the box first.

The chart below gives the identification of the various inner columns used on the above models, together with interchangeability.

Model	Part No.	Length	Thread on Inner Column	Remarks
R.H.D. 1948-52 and early 1953	261425	28 $\frac{21}{32}$ "	R.H.	Bronze nut; replaced by Part No. 242302
R.H.D. Late 1953	242302	27 $\frac{19}{32}$ "	R.H.	Steel nut; interchangeable with 261425 in spite of difference in length
L.H.D. 1948-52 and early 1953	261424	28 $\frac{21}{32}$ "	L.H.	Bronze nut; replaced by Part No. 242303
L.H.D. Late 1953	242303	27 $\frac{19}{32}$ "	L.H.	Steel nut; interchangeable with 261424 in spite of difference in length
R.H.D. 1954-55	242304	29"	L.H.	Steel nut
L.H.D. 1954-55	242305	29"	R.H.	Steel nut

Item 130 SUBJECT: BODY FLOOR AND DOOR SEALING RUBBERS

MODELS: 1955 '60', '75' and '90'

MODIFICATION: Improved sealing rubber for doors

PART NUMBERS:	Body floor and sills	1	314235
	Sealing rubber, front sill	2	314206
	Sealing rubber, rear sill R.H.	1	314207
	Sealing rubber, rear sill L.H.	1	314208
	Spring washer	} Fixing sealing rubbers to floor sill	18	3073
	Nut (2 B.A.)		18	2247

COMMENCING NUMBERS:

Cars numbered:
 '60' Home R.H.D. models from 53300442 onwards
 '60' Export L.H.D. models from 53330005 onwards
 '60' Export R.H.D. models from 53360048 onwards
 '75' Home R.H.D. models from 54301004 onwards
 '75' Export L.H.D. models from 54330199 onwards
 '75' Export R.H.D. models from 54360067 onwards
 '90' Home R.H.D. models from 55301562 onwards
 '90' Export L.H.D. models from 55330331 onwards
 '90' Export R.H.D. models from 55360995 onwards

NOTE.—Certain earlier cars are also fitted with the latest type sealing rubbers.

REMARKS

Only the latest type floor and sills will be supplied, complete with sealing rubbers, for earlier 1955 models. The latest type sealing rubbers can be fitted to earlier 1955 models and to any 1950-54 models inclusive.

To fit sealing rubbers on earlier models proceed as follows:—

1. Remove old rubbers, clean out channels. It will be necessary to open out channels in order to fit new rubbers.
2. The two front sill rubbers are interchangeable either R.H. or L.H., but rear rubbers are handed due to the difference in the position of the studs as shown at 'A' and 'B', Fig. 1. Dimension 'B' must be fitted to the rear of the car.

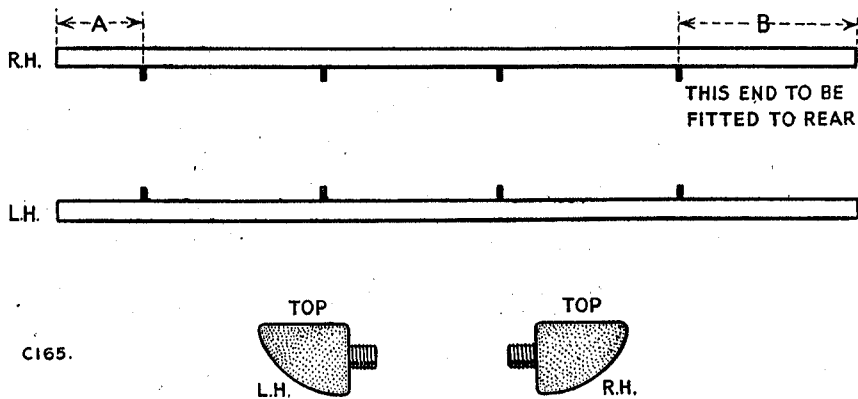


Fig. 1 Identification of sealing rubbers.

3. The rubbers must be fitted with the flat surface upwards, as shown at Fig. 1.
4. Place rubber in position at channel and mark off position of holes.
5. Drill holes in channel (No. 7 drill .201 in.) and fit rubbers, using the nuts and spring washers.
6. Excess rubber to be trimmed off after fitting.

NOTE. 1. A 2 B.A. die should be run down studs before fitting.
2. Do not over-tighten the nuts.

Item 131 SUBJECT: COVER FOR PETROL PUMP IN BOOT

MODELS: 1952-55 Car

COMPLAINT: Feed wire to petrol pump "shorting".

CAUSE: Wire chafing between cover and body.

CURE: Drill cover and fit rubber grommet for wire, as detailed in the sketch below.

PART NUMBER: Rubber grommet for petrol pump wire 1 22066

COMMENCING NUMBERS: Cars numbered:
 '60' Home R.H.D. models from 53300722 onwards
 '60' Export L.H.D. models from 53330008 onwards
 '60' Export R.H.D. models from 53360056 onwards
 '75' Home R.H.D. models from 54301701 onwards
 '75' Export L.H.D. models from 54330331 onwards
 '75' Export R.H.D. models from 54360117 onwards
 '90' Home R.H.D. models from 55303049 onwards
 '90' Export L.H.D. models from 55330433 onwards
 '90' Export R.H.D. models from 55361387 onwards

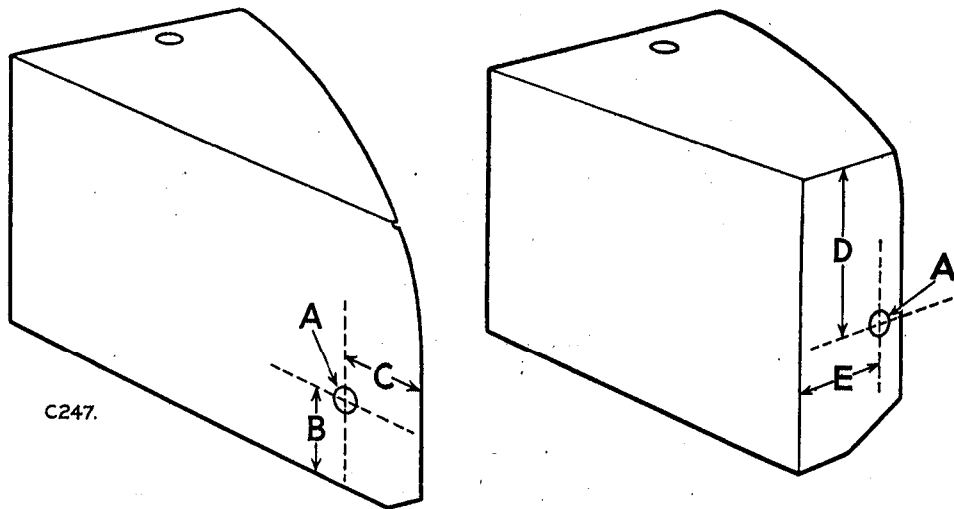


Fig. 2. Showing position of hole for rubber grommet in petrol pump cover.

'A'— $\frac{1}{8}$ in. (16 mm) hole	} 1952-53 '75'	'A'— $\frac{1}{8}$ in. (16 mm) hole	} 1954-55 '60', '75' and '90'
'B'—2 in. (51 mm)		'D'— $3\frac{1}{4}$ in. (84 mm)	
'C'—2 in. (51 mm)		'E'— $2\frac{3}{8}$ in. (60 mm)	

Yours faithfully,

For THE ROVER COMPANY LIMITED

M. Brewster

Publications Editor,
Technical Service Department.