

THE ROVER COMPANY LIMITED
S E R V I C E D E P A R T M E N T

SOLIHULL, BIRMINGHAM, England
Telephone Nos.: Sheldon 2461, 2613
Telegrams: Rovrepair, Solihull

Rover Service News Letter No. 55

May, 1955

TO ALL DISTRIBUTORS AND DEALERS

Dear Sirs,

The changes and developments set out below have taken place during the past month.

With this issue we are also including copies of Amendment No. 5 to the Land-Rover and Car Spare Parts Catalogues.

Please note that Amendment No. 5 to the Car Spare Parts Catalogue will be the last one issued for the present Edition, pending a complete re-issue of the Catalogue.

The 12th Edition of the Master Spare Parts Price List, together with Amendment No. 1, will be circulated under separate cover. This publication, which incorporates all information circulated by means of the Cumulative Supplements 1-7 inclusive, supersedes the 11th Edition (yellow book) and all yellow supplement sheets which should be destroyed upon receipt of the 12th Edition.

SECTION I. POLICY

Item 113 SUBJECT: MULTI-GRADE OILS.

REMARKS: Distributors and Dealers will possibly receive enquiries concerning the use, in Rover Cars and Land-Rover vehicles, of multi-grade oils. It is therefore confirmed that the Rover Company approves the use of Shell X100 10W/30 and B.P. Special Energol visco-static, in these instances where oils having the characteristics concerned are called for.

When using these multi-grade oils particular attention should be paid to the recommendations of the manufacturers concerning engine condition and oil changes.

Item 114 SUBJECT: REAR WINCH.

MODELS: 1948-55 Land-Rover.

REMARKS: Due to the small demand for the Land-Rover Rear winch, Part Number 231709, it has been decided to delete this item from our Specification, now that stocks have been exhausted.

However, component parts for normal service replacements will still be available from our Spares Department.

Item 115 SUBJECT: RECONDITIONED ENGINES.

MODELS: 1939-47 14 and 16 h.p.

REMARKS: We are pleased to state that we are once again in a position to accept 1939-47 14 and 16 h.p. engines for reconditioning.

Sheet No. 1

- Item 116 SUBJECT: VEHICLE AND UNIT NUMBERING.**
MODELS: 1955 Land-Rover.
REMARKS: The Vehicle and unit numbering system for the 1955 Land-Rover has been revised to provide additional ranges of numbers as detailed below:—
- 86 Vehicle and chassis serial numbers.
 - Home R.H.D. models: 57100001 to 57109999 and then 57110000 onwards.
 - Export L.H.D. models: 57130001 to 57139999 and then 57140000 onwards.
 - Export R.H.D. models: 57160001 to 57169999 and then 57170000 onwards.
 - C.K.D. R.H.D. Export models remain unchanged at 57660001 onwards.
 - C.K.D. L.H.D. Export models remain unchanged at 57630001 onwards.
 - 86 Engine, gearbox and front axle serial numbers.
 - R.H.D. models: 57100001 to 57109999 and then 57110000 onwards.
 - L.H.D. models: 57130001 to 57139999 and then 57140000 onwards.
 - 86 Rear axle serial numbers.
 - All models: 57100001 to 57109999 and then 57110000 onwards.
 - 107 Vehicle and chassis serial numbers.
 - Home R.H.D. models: 57200001 to 57209999 and then 57210000 onwards.
 - Export L.H.D. models: 57230001 to 57239999 and then 57240000 onwards.
 - Export R.H.D. models: 57260001 to 57269999 and then 57270000 onwards.
 - C.K.D. R.H.D. Export models remain unchanged at 57760001 onwards.
 - C.K.D. L.H.D. Export models remain unchanged at 57730001 onwards.
 - 107 Engine and gearbox serial numbers.
 - R.H.D. models: 57100001 to 57109999 and then 57110000 onwards.
 - L.H.D. models: 57130001 to 57139999 and then 57140000 onwards.
 - 107 Front axle serial numbers.
 - R.H.D. models: 57200001 to 57209999 and then 57210000 onwards.
 - L.H.D. models: 57230001 to 57239999 and then 57240000 onwards.
 - 107 Rear axle serial numbers.
 - All models: 57200001 to 57209999 and then 57210000 onwards.

SECTION II. WORKSHOP AND SPARE PARTS INFORMATION

- Item 117 SUBJECT: PISTONS AND CRANKSHAFT.**
MODELS: 1954-55 "90", 1955 "75".
REMARKS: As the cylinder bore size of the 1954-55 "90" and the 1955 "75" is exactly the same, with little difference in the overall height of the piston, and with the basic dimensions of the crankshaft identical; it follows that stock can easily be confused if only a superficial examination is given when binning, supplying or fitting these parts. Great care must be taken to ensure that the correct type of piston and crankshaft, for the model concerned, is supplied and fitted when engines in the above range are being overhauled.
- It is possible to fit the wrong pistons or crankshafts in either model and this could of course have disastrous results. The sketches below clearly show the means of identification of the two types of piston and crankshaft.

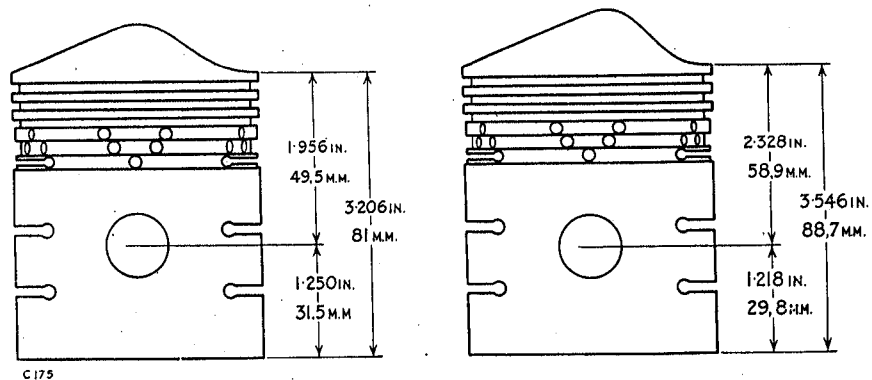
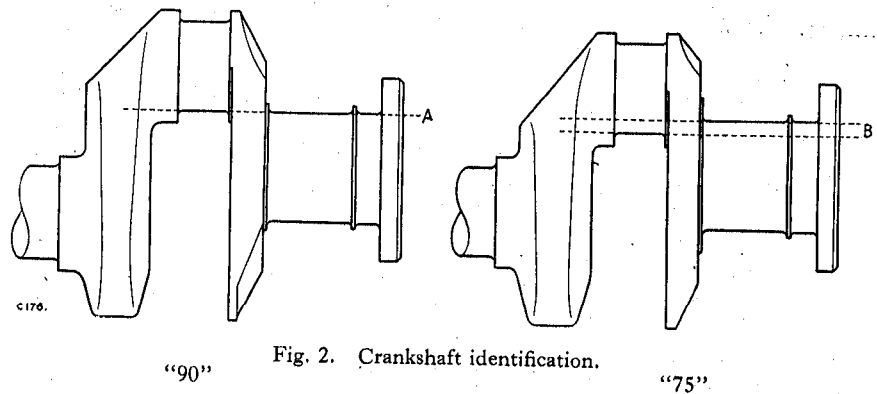


Fig. 1. Piston identification.

"90"

"75"



In addition the pistons can be identified by the casting number on the inside of the piston skirt as follows:—

“75” Casting No. M1577-2, “90” Casting No. 240633.

Future supplies of crankshafts from the Rover Spares Department will also be identified by having the numbers “75” or “90”, as the case may be, stamped on the face of the web adjacent to No. 1 main journal.

Item 118 SUBJECT: CYLINDER HEAD GASKET.

MODELS: 1955 “75” and “90”.

MODIFICATION: Corgasyl corrugated steel cylinder head gasket replaces copper and asbestos.

PART NUMBERS: Cylinder head gasket 1 263523.

COMMENCING NUMBERS: Engines numbered:
 “75”: All models 54301987 onwards.
 “90”: All models 55304760 onwards.

REMARKS: The “Corgasyl” steel gasket should not be fitted to models prior to those listed above, as a design modification to the cylinder head has also taken place and there is a danger of the steel gasket “blowing”, due to the possibility that one of the corrugations in the gasket may overlap the holes for the inlet push rods.

It is important that the “Corgasyl” steel gasket is correctly fitted with the side marked “This side up” facing the cylinder head.

Jointing compound must not be used.

After tightening down the cylinder head bolts in the order and to the specified torque as shown at Fig. 3 a re-check of the torque figures must be made.

This operation is necessary to counteract reduction in torque of adjacent bolts during initial tightening owing to flattening out of the corrugations.

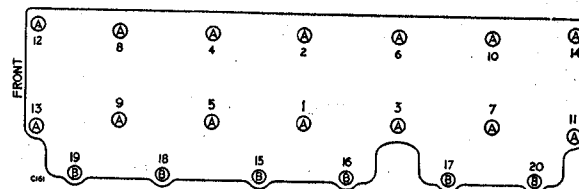


Fig. 3. Order of tightening cylinder head bolts. (“75” and “90” models with steel cylinder head gasket)

Bolts A to be tightened to 50 lbs./ft. (7 mKg.)
 Bolts B to be tightened to 30 lbs./ft. (4 mKg.)

Item 119 SUBJECT: WATER INLET AND OUTLET PIPES TO THERMOSTAT.

MODELS: 1955 Land-Rover.

MODIFICATION: Cast iron pipes replace aluminium castings.

PART NUMBERS: Water inlet pipe to thermostat 1 263630
Water outlet pipe, thermostat to radiator 1 263607

COMMENCING NUMBERS: Engines numbered:
86 and 107 R.H.D. models from 57109802 onwards.
86 and 107 L.H.D. models from 57134887 onwards.

REMARKS: The cast iron and aluminium pipes are completely interchangeable.

Item 120 SUBJECT: DYNAMO.

MODELS: 1954-55 "75" and "90".

COMPLAINT: Failure of dynamo bearing at commutator end.

REMARKS: One or two cases have been reported of premature bearing failure on the dynamo, due to lack of lubrication.

Periodically the dynamo must be lubricated at the commutator end by inserting the nozzle of a pump type oil can in the small central hole marked "Oil" and injecting just sufficient engine oil to moisten the lubricating pad.

Item 121 SUBJECT: FRONT SUSPENSION BOTTOM LINKS.

MODELS: 1955 "60", "75" and "90".

MODIFICATION: $\frac{1}{4}$ in. (6 mm.) bolts and nuts fixing the support plate to the links replaced by $\frac{5}{16}$ in. (8 mm.) bolts and nuts.

PART NUMBERS: Bottom links and support assembly L.H. 1 265083
Bottom links and support assembly R.H. 1 265082
Strap for bottom link $\frac{1}{8}$ in. holes 4 265075
Bolt ($\frac{1}{8}$ in. \times $\frac{1}{2}$ in. long) } Fixing links and straps 28 237161
Spring washer } to support 28 3075
Nut ($\frac{1}{8}$ in.) 28 251321

COMMENCING NUMBERS: Cars numbered:
"60" Home models from 53300442 onwards.
"60" Export L.H.D. models from 53330005 onwards.
"60" Export R.H.D. models from 53360048 onwards.
"75" Home models from 54301004 onwards.
"75" Export L.H.D. models from 54330198 onwards.
"75" Export R.H.D. models from 54360067 onwards.
"90" Home models from 55301546 onwards.
"90" Export L.H.D. models from 55330331 onwards.
"90" Export R.H.D. models from 55360991 onwards.

REMARKS: Earlier and late type bottom links and support assemblies are completely interchangeable. Only the latest type will be supplied for Service replacements on earlier 1955 and 1954 "60", "75" and "90" models and for the 1952-53 "75".

Item 122 SUBJECT: BRAKE CONNECTING TUBE.

MODELS: 1955 "60", "75" and "90".

MODIFICATION: Locknut replaces standard nut on brake connecting tube at fork end.

PART NUMBER: Locknut ($\frac{3}{8}$ in. B.S.F.) 1 2823.

COMMENCING NUMBERS: Cars numbered:
"60" Home models from 53300518 onwards.
"60" Export L.H.D. models from 53330005 onwards.
"60" Export R.H.D. models from 53360049 onwards.
"75" Home models from 54301091 onwards.
"75" Export L.H.D. models from 54330216 onwards.
"75" Export R.H.D. models from 54360077 onwards.
"90" Home models from 55301921 onwards.
"90" Export L.H.D. models from 55330338 onwards.
"90" Export R.H.D. models from 55361106 onwards.

REMARKS: This modification is to allow the master cylinder connecting tube to be screwed further up to the fork, thereby providing increased clearance between the master cylinder end cover and boot retainer on the push rod at the end of the stroke.

Item 123 SUBJECT: **EXHAUST SILENCER.**
 MODELS: 1955 "75" and "90".
 MODIFICATION: Exhaust diameter increased from 5 in. (120 mm.) to 6 in. (144 mm.) to reduce exhaust noise.
 PART NUMBER: Exhaust silencer 1 266459.
 COMMENCING CARS NUMBERED: Cars numbered:
 "75" Home models from 54301113 onwards.
 "75" Export L.H.D. models from 54330216 onwards.
 "75" Export R.H.D. models from 54360081 onwards.
 "90" Home models from 55301938 onwards.
 "90" Export L.H.D. models from 55330338 onwards.
 "90" Export R.H.D. models from 55361129 onwards.
 REMARKS: The 6 in. silencer is interchangeable with the 5 in. type and can be used as a replacement on any earlier 1954 and 1955 "75" and "90" with a single exhaust silencer.

Item 124 SUBJECT: **CHASSIS FRAME, COMPOSITE TYPE.**
 MODELS: 1950 Land-Rover from vehicles numbered 06113530 (Basic), 06200410 (Station Wagon) and 06300031 (Welder) onwards.
 1951-53 Land-Rover
 REMARKS: Future supplies of chassis frame Part No. 236805 will be complete with the body support angles suitable for the 1952-53 Land-Rover. When using these chassis frames on 1950-51 models, in the range detailed above, it will be necessary to remove those body support angles marked "A" in the sketch below.

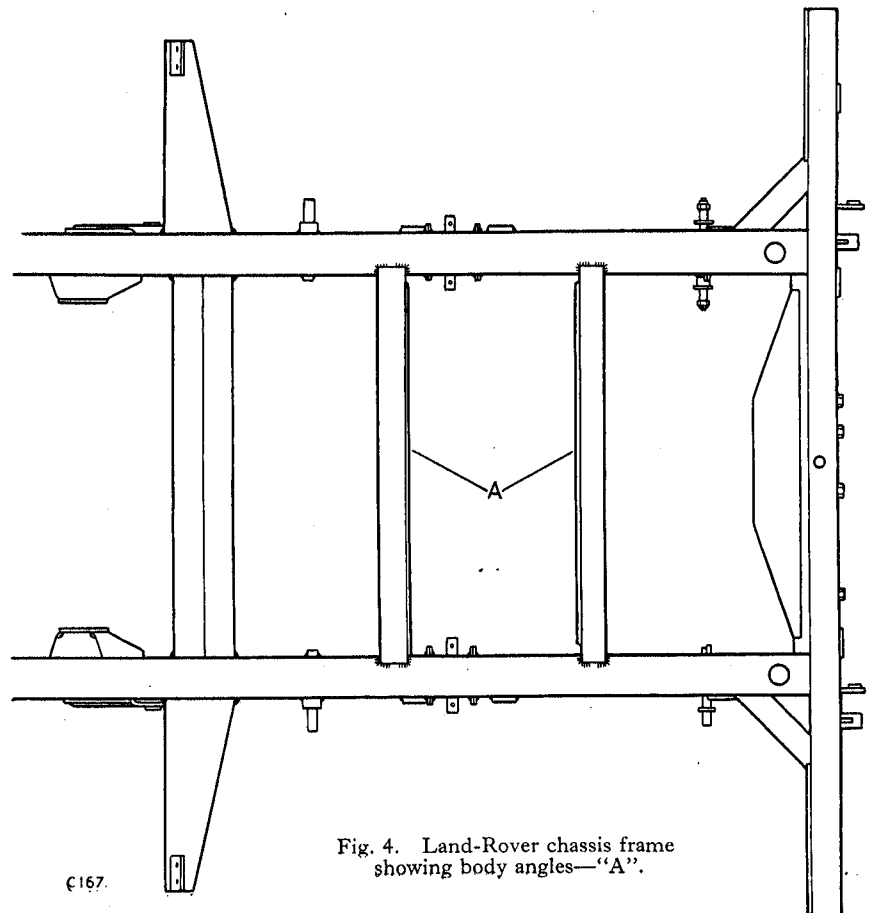


Fig. 4. Land-Rover chassis frame showing body angles—"A".

©167.

Item 125 SUBJECT: CLUTCH CROSS SHAFT.

MODELS: 1955 Land-Rover.

MODIFICATION: One piece shaft replaces fabricated shaft.

PART NUMBER: Cross shaft for clutch 1 263882
 Dust cover for cross shaft 1 263977.

COMMENCING NUMBERS: Vehicles numbered:
 86 Home models from 57103157 onwards.
 86 Export L.H.D. models from 57132328 onwards.
 86 Export R.H.D. models from 57161231 onwards.
 86 C.K.D. L.H.D. models from 57630355 onwards.
 86 C.K.D. R.H.D. models from 57661099 onwards.
 107 Home models from 57200419 onwards.
 107 Export L.H.D. models from 57231055 onwards.
 107 Export R.H.D. models from 57261283 onwards.
 107 C.K.D. L.H.D. models from 57730025 onwards.
 107 C.K.D. R.H.D. models from 57760574 onwards.

REMARKS: The latest type shaft can be used on earlier 1954-55 models provided the dust cover, part number 263977, is also fitted.

Item 126 SUBJECT: TOWING ATTACHMENTS.

MODELS: 1955 Land-Rover.

MODIFICATION: Introduction of revised towing attachment as detailed below:—

PART NUMBERS:	Bracket for towing jaw	1	264522
	Bolt ($\frac{3}{8}$ " \times $4\frac{1}{2}$ " long)	} Fixing bracket to rear cross member	2	237195
	Spring washer		2	3076
	Nut ($\frac{3}{8}$ ")	} Fixing bracket or towing jaw to rear cross member	2	2827
	Bolt ($\frac{3}{8}$ " \times 5" long)		2	240974
	Spring washer	} Fixing towing jaw to attachment bracket	2	3080
	Nut ($\frac{3}{8}$ ")		2	219668
	Bolt ($\frac{3}{8}$ " \times $1\frac{3}{4}$ " long)	} Fixing towing jaw to attachment bracket	2	240964
	Spring washer		2	3080
	Nut ($\frac{3}{8}$ ")		2	219668

COMMENCING NUMBERS: Vehicles numbered:
 86 Home R.H.D. models from 57102760 onwards.
 86 Export L.H.D. models from 57131995 onwards.
 86 Export R.H.D. models from 57161176 onwards.
 107 Home R.H.D. models from 57200394 onwards.
 107 Export L.H.D. models from 57230935 onwards.
 107 Export R.H.D. models from 57261114 onwards.

REMARKS: The towing attachments supplied with the basic Land-Rover from the vehicle numbers as detailed above are:

Bracket for towing jaw, part number 264522, and towing jaw, part number 233828, as shown in Fig. 5 below.

The rear draw bar, part number 232625, which was formerly supplied with every vehicle is now obtainable only as an Extra.

For your information we show in the following sketches the various towing attachments which are available together with the Extra designation, where applicable, and Service part numbers.

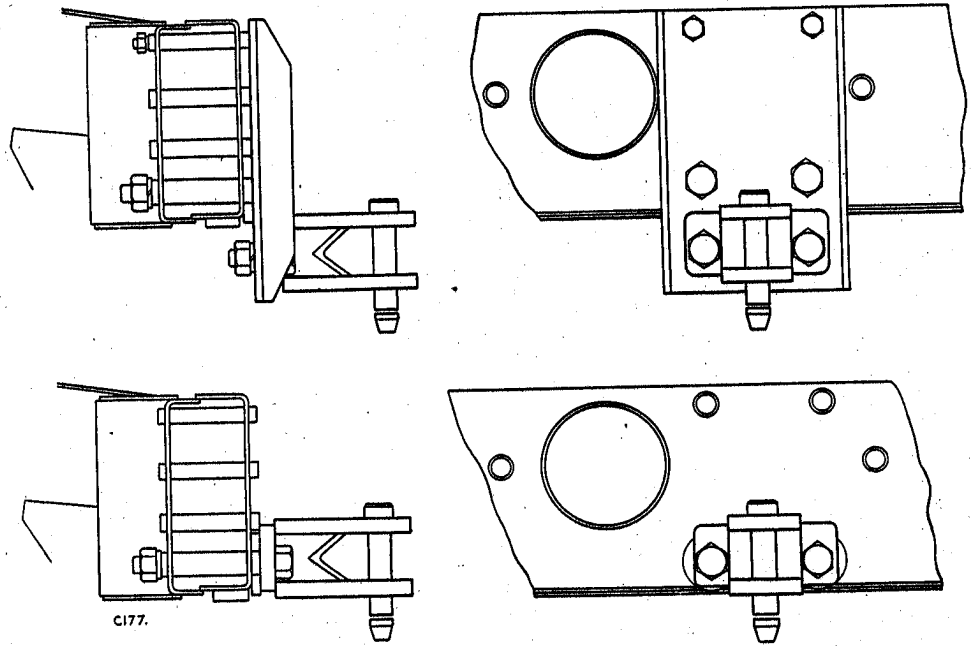


Fig. 5. Basic attachment bracket and towing jaw supplied with each Land-Rover, showing alternative positions for the towing jaw. Part numbers as detailed above.

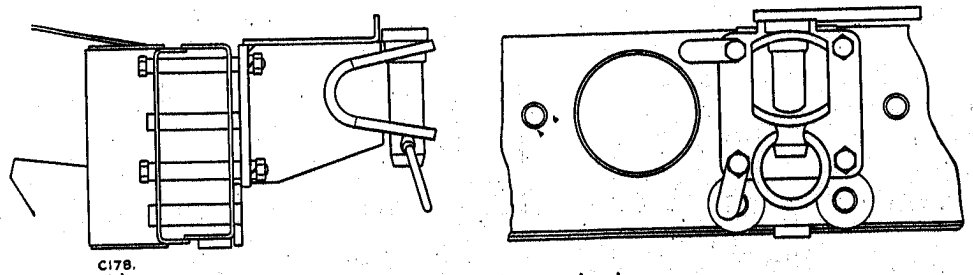


Fig. 6. Heavy duty towing jaw.

Extra designation E.28B.

Service part number 232493.

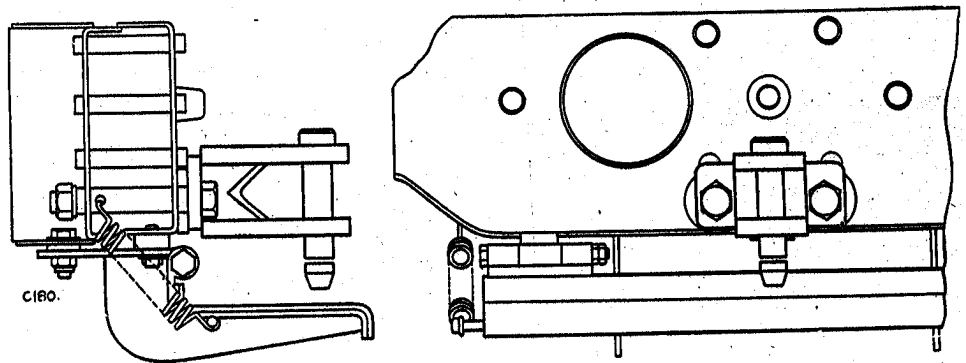


Fig. 7. Land-Rover 86 Station Wagon towing jaw, supplied as basic equipment with each Station Wagon.

Service part number 233828.

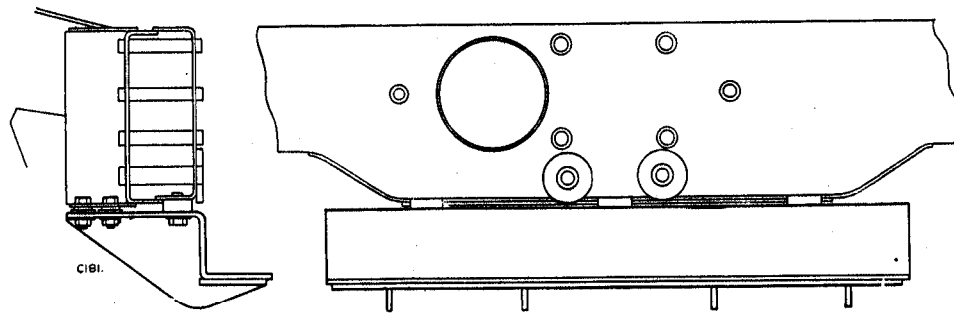


Fig. 8. Rear tow plate.

This item, which is now an Extra, was formerly supplied as part of the basic vehicle.
Extra designation E.109. Service part number 265088.

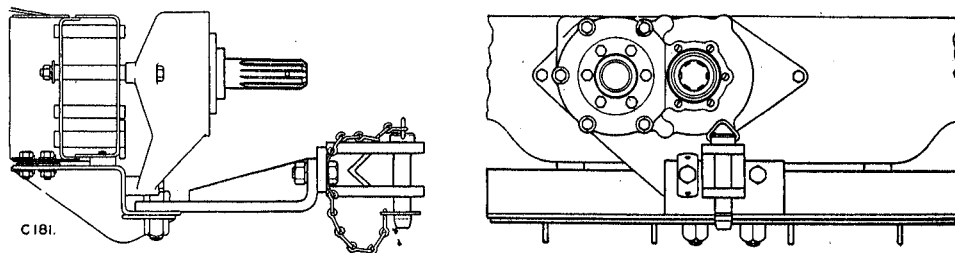


Fig. 9. Rear tow plate must be used, in conjunction with the tow plate illustrated at Fig. 8, when the rear power take off drive is fitted and the basic towing jaw is also required.
Service part number 231213.

NOTE.—Future supplies of the rear power take-off will include the rear tow plate, part number 265088.

- Item 127 SUBJECT: WINDSCREEN WASHER PUMP AND PIPES.**
- MODELS:** 1954-55 "60", "75" and "90".
- PART NUMBER:** Windscreen washer pump and pipes 1 267712
- REMARKS:** Earlier 1955 and all 1954 "60", "75" and "90" models were fitted with plastic pipes from the windscreen washer pump unit to nozzles and reservoir.
These plastic pipes are no longer obtainable and all Service replacements for these items will be satisfied with the latest type pump unit with rubber pipes and complete with nozzles.
The complete kit of parts will supplied under part number 267712.

Yours faithfully,

For THE ROVER COMPANY LIMITED

M. Brewer.

Publications Editor,
Technical Service Department.