

## Rover Service News Letter No. 42

TO ALL DISTRIBUTORS AND DEALERS

### GENERAL.

#### Item 27. CAR TYRE REMOVAL AND FITTING—BALANCE WEIGHTS.

There is great danger of lead balance weights being left inside tyres and causing premature failure. Weights may be dislodged by levers or the cover beads and fall into the cover without the fitter being aware that anything has happened.

Therefore, all weights should be removed with a suitable tool prior to deflating the tyre and put in a safe place before removal of the cover is commenced. If balancing facilities are available it is advisable for the assembly to be rebalanced when the tyre is refitted.

If there are no facilities for rebalancing and the same cover is going to be refitted, all balance weights should still be removed, but the weight positions and amounts should be marked on the rim. If the original cover is later replaced in the same position on the rim and the weights are likewise fitted in their original positions after inflation, the balance may not be greatly disturbed.

If a new tyre is being fitted, all balance weights should first be removed and in the absence of rebalancing facilities, the tyre should be fitted in accordance with the standard instructions applying to balance marks on covers and tubes.

In addition, all covers should be carefully examined inside for foreign objects immediately prior to the insertion of the tube or refitment to the wheel. This applies whether original tyres are being replaced or new ones.

The above should be brought to the notice of all Service personnel immediately.

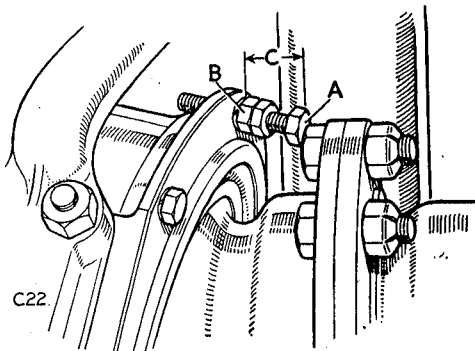
#### Item 28 ENGINE NUMBERING, ALL MODELS

We would again remind Distributors and Dealers that, when fitting a reconditioned or replacement engine of any kind, the number of the old engine, as in the Registration Book, must be stamped on the replacement unit. It is the responsibility of the Distributor or Dealer to inform the sub-Dealer of this fact when supplying an engine.

#### Item 29 TURNING CIRCLE, 1954 LAND-ROVER 107

To improve the turning circle, from 50 ft. (15,25m) to 48-49 ft. (14,64-14,94m) on the Land-Rover 107 the solid block stop bolt has been replaced by an adjustable type bolt, Part No. 250698 with two locknuts, Part No. 2823, for each bolt.

This alteration has been incorporated from Vehicles numbered 47200002, 47230222 and 47260236 onwards. Any earlier vehicle can be modified by discarding the solid stop bolts and fitting two adjustable lock stop bolts and four locknuts. These should be adjusted to the dimension shown in the sketch. (86 dimension given for reference.)



Adjusting lock stop bolt.

- A. Lock stop bolt.
- B. Locknuts.
- C. Land-Rover 86, fitted with  
6.00 x 16 tyres. ....  $\frac{11}{16}$  in. (17,5 mm).  
Land-Rover 107, all models,  
and 86, fitted with 6.50 x 16  
or 7.00 x 16 tyres ....  $\frac{3}{4}$  in. (21,8 mm).

- Item 30 CHASSIS FRAME 1954 107** Provision has now been made for fitting the Front Winch and Rear Power Take Off to the Land-Rover 107. The necessary modifications to the chassis frame have been introduced from Vehicles numbered 47200090, 47230452, 47260573 and 47760033 onwards.

All Service replacement Chassis frames will be of the latest type, obtainable under Part Nos. 244367 R.H.D. and 244368 L.H.D.

The Front Winch, complete with fitting instructions suitable for the models above, and earlier models with slight modifications to the chassis frame, can be obtained under Part No. 234809.

A Rear Power Take Off complete, suitable for the models above, can be obtained under Part No. 245874.

This Rear Power Take Off cannot be fitted to 107 models prior to the commencing numbers listed above unless the latest type chassis frame is also fitted.

**ROVER "60", "75" and "90"**

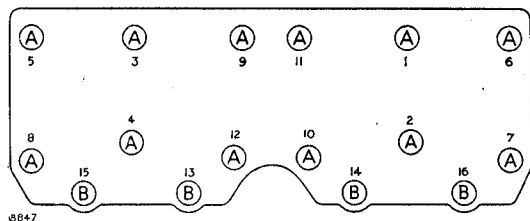
- Item 31 PLUNGER FOR OIL PRESSURE RELEASE VALVE 1954 "60" and "90"** To eliminate tipping on assembly the head diameter of the Plunger for oil pressure release valve has been increased to  $\frac{19}{32}$  in. (15.08mm). The new Plunger will be supplied under Part No. 245940 and has been fitted on production from Engines numbered 60: 43300709 onwards and 90: 45301002 onwards.

Only the latest type Plunger will be used for all Service replacements.

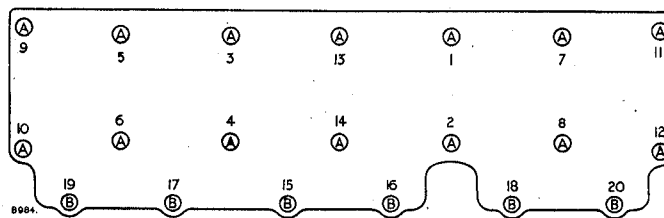
- Item 32 CYLINDER HEAD GASKETS 1954 "60" and "90"** Copper and asbestos cylinder head gaskets have been introduced on the "60" and "90" from Engines numbered 60: 43301316 onwards and 90: 45302015 onwards.

The copper and asbestos gaskets will be supplied for all Service replacements under Part Nos. 240114 for the "60" and 238171 for the "90".

When refitting the cylinder head it is **very important** to tighten the cylinder head bolts in accordance with the diagrams below.



Order of tightening cylinder head bolts. "60".



Order of tightening cylinder head bolts. "75" and "90".

Bolts "A". Tighten to 50 lbs. ft. (7 mKg.) torque.

Bolts "B". Tighten to 30 lbs. ft. (4 mKg.) torque.

- Item 33 FAN BLADE 1954 "60", "75" and "90"** To stiffen up the fan blade, reinforcing plates have been introduced from Cars numbered 60: 43300761, 43330006, 43360008, 43630001 and 43660009 onwards, 75: 44301750, 44330402, 44360360 and 44760009 onwards, 90: 45300359, 45330242 and 45360512 onwards.

These new parts can be fitted to any earlier car and are obtainable from our Spares Dept. under Part Nos.:

Reinforcing plate 1	244319	"60"
„ „ 1	244318	"75"
„ „ 1	244317	"90"

ROVER SERVICE NEWS LETTER No. 42—*continued.*

Item 34 AXLE RATIO  
1954 "90"

A 3-9 ratio Rear Axle is now available as an optional extra on the "90" only. Any "90" with the 3-9 ratio axle can be identified by the following points:—

<i>Description</i>	<i>Part No.</i>	<i>Remarks</i>
REAR AXLE	244928	"3-9" painted on dome of axle. Numbered 46300001 onwards.
DIFFERENTIAL ONLY	244927	"3-9" stamped on flange of housing.
CROWN WHEEL & BEVEL PINION	245367	Crown wheel 39 teeth. Bevel pinion 10 teeth.
SPEEDOMETER—		
STANDARD M.P.H.	244929	"1400 R.P.M." on speedometer face.
STANDARD K.P.H.	244930	"860 R.P.K." on speedometer face.
AMERICA. DOLLAR AREA. M.P.H.	244931	"1400" R.P.M." on speedometer face.
MEXICO	K.P.H. 244932	"860 R.P.K." on speedometer face.
		} Fitted with green flasher light.

**THE ROVER COMPANY LIMITED**  
**S E R V I C E D E P A R T M E N T**

---

SOLIHULL, BIRMINGHAM, England  
Telephone Nos.: Sheldon 2461, 2613  
Telegrams: Rovrepair, Solihull

**Rover Service News Letter No. 42b**

*March, 1954*

**HOME DISTRIBUTORS AND DEALERS**

**Item 1 LAND-ROVER  
DAY AND NIGHT  
DISPLAY SIGNS**

With this News letter is enclosed a leaflet describing a Land-Rover Day and Night display sign which we offer to Distributors and Dealers in response to many enquiries. It is very similar in appearance to the successful Rover sign but is illuminated by a fluorescent tube.

The sign is offered at the very reasonable price of £6 18s. 0d. and is complete and ready for use.

All orders should be addressed to our Field Service (Spares) Department and will be dealt with in strict rotation.